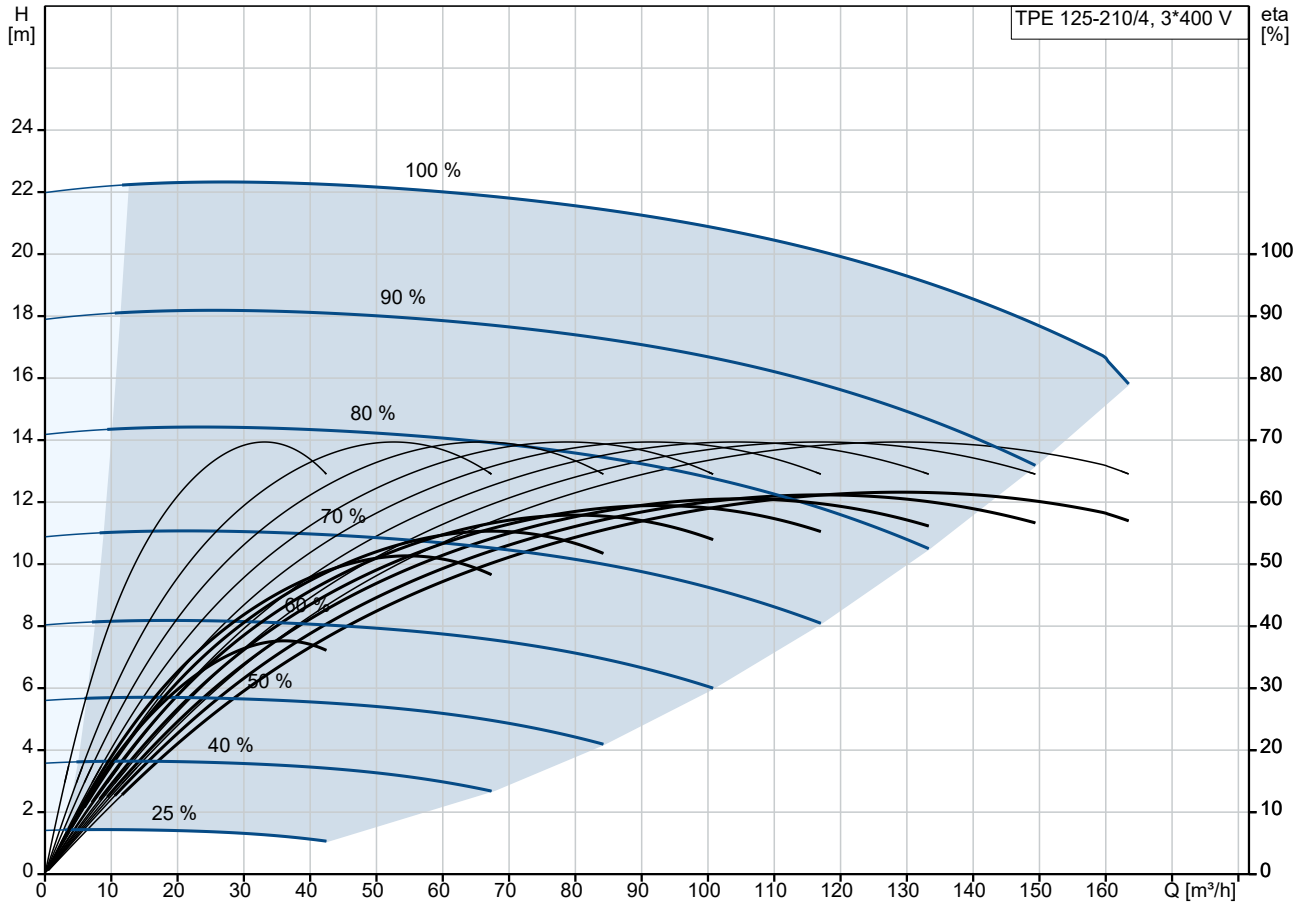
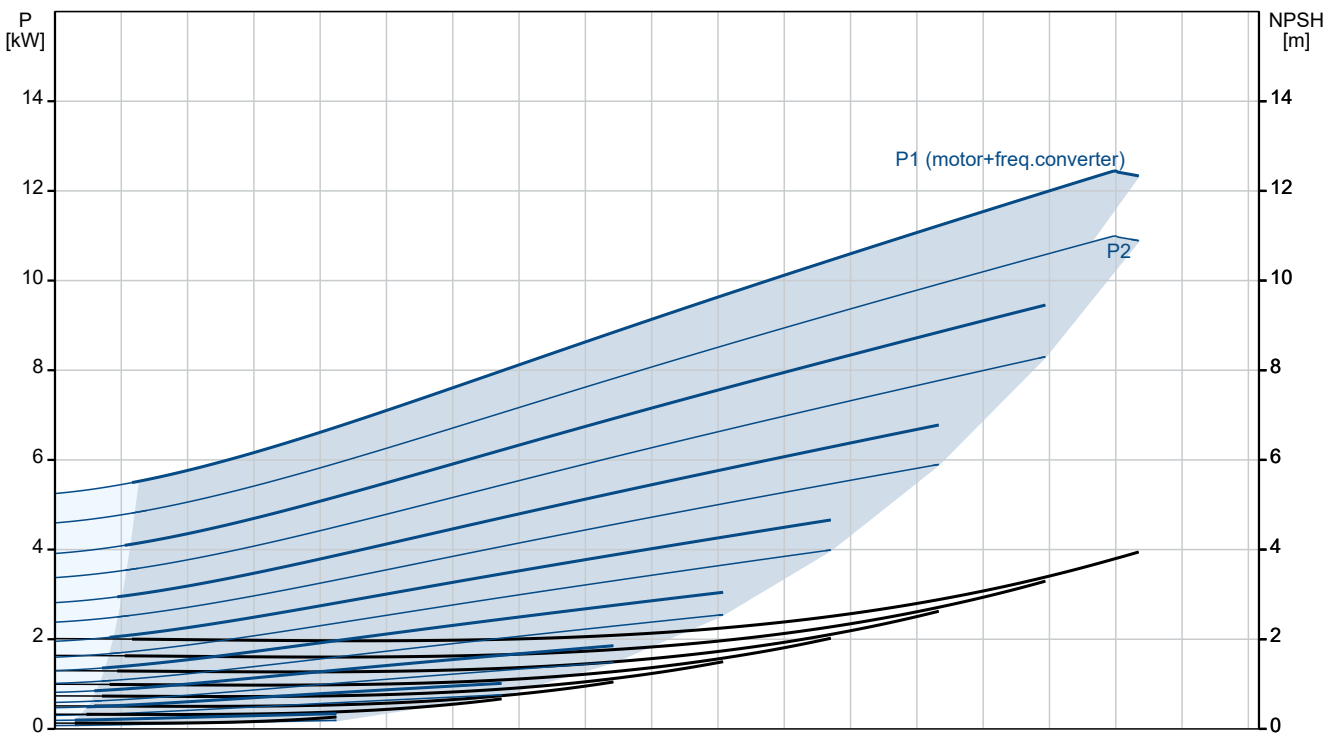


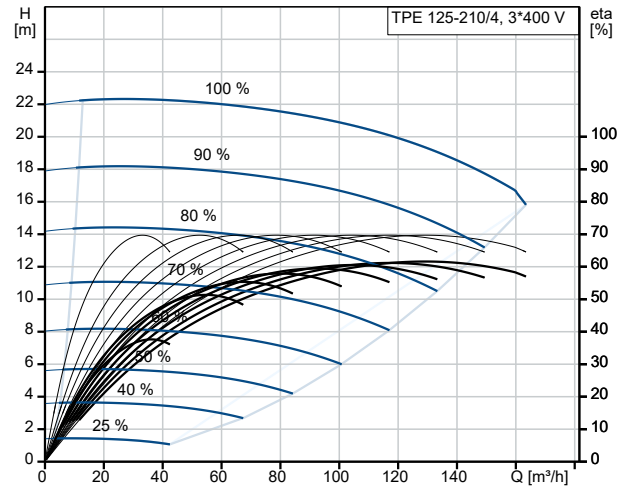
96110520 TPE 125-210/4 A-F-A-BAQE 50 Hz



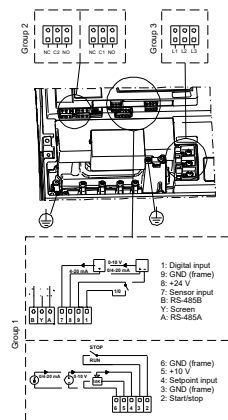
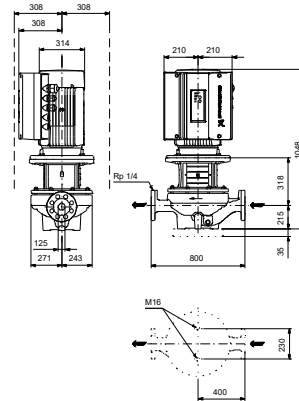
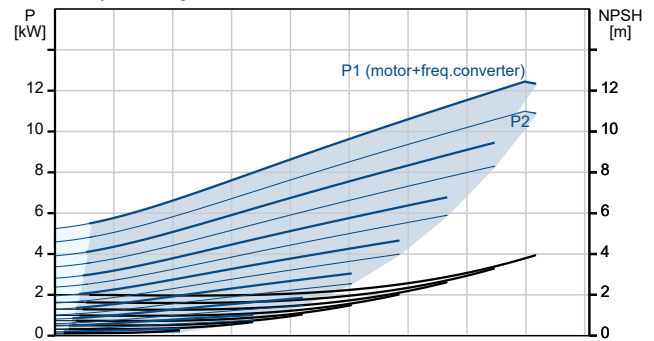
Pumped liquid = Water
Liquid temperature during operation = 20 °C
Density = 998.2 kg/m³



Description	Value
General information:	
Product name:	TPE 125-210/4 A-F-A-BAQE
Product No:	96110520
EAN number:	5700397026427
Price:	
Technical:	
Pump speed on which pump data are based:	1460 rpm
Rated flow:	127.7 m ³ /h
Rated head:	19.2 m
Maximum head:	210 dm
Actual impeller diameter:	254 mm
Code for shaft seal:	BAQE
Curve tolerance:	ISO9906:2012 3B
Pump version:	A
Materials:	
Pump housing:	Cast iron
Pump housing:	EN-JL1040
Pump housing:	A48-40 B
Impeller:	Cast iron
Impeller:	EN-JL1030
Impeller:	A48-30B
Material code:	A
Installation:	
Maximum ambient temperature:	40 °C
Maximum operating pressure:	16 bar
Type of connection:	DIN
Size of connection:	DN 125
Pressure rating for connection:	PN 16
Port-to-port length:	800 mm
Connect code:	F
Liquid:	
Pumped liquid:	Water
Liquid temperature range:	0 .. 120 °C
Selected liquid temperature:	20 °C
Density:	998.2 kg/m ³
Electrical data:	
Motor type:	160MB
Rated power - P2:	11 kW
Mains frequency:	50 Hz
Rated voltage:	3 x 380-480 V
Rated current:	22.0-17.8 A
Cos phi - power factor:	0.86-0.81
Rated speed:	240-1750 rpm
IE efficiency:	IE3 91,4%
IE Efficiency class:	IE3
Motor efficiency at full load:	91.4 %
Number of poles:	4
Enclosure class (IEC 34-5):	IP55
Insulation class (IEC 85):	F
Built-in motor protection:	YES
Motor No:	86906100
Controls:	
Control panel:	Standard
Function Module:	PUMP I/O
Others:	
Minimum efficiency index, MEI ≥:	0.12



Pumped liquid = Water
 Liquid temperature during operation = 20 °C
 Density = 998.2 kg/m³





Company name:

Created by:

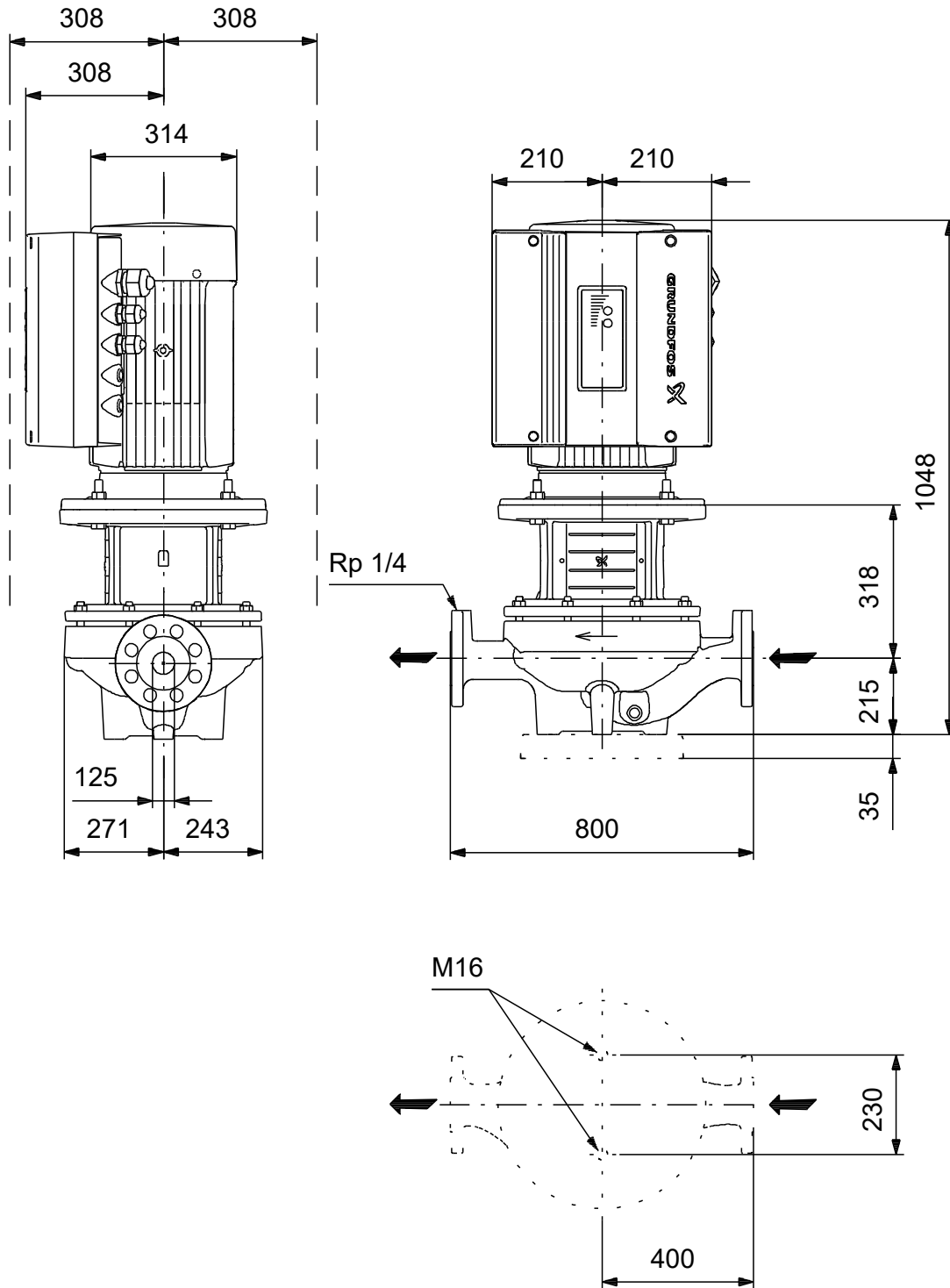
Phone:

Date:

01/07/2024

Description	Value
Net weight:	304 kg
Gross weight:	335 kg
Shipping volume:	1.12 m ³

96110520 TPE 125-210/4 A-F-A-BAQE 50 Hz



Note! All units are in [mm] unless others are stated.
Disclaimer: This simplified dimensional drawing does not show all details.